



QUALITY MARINE
EQUIPMENT SINCE 1981



2018 PRICE LIST

PSS SHAFT SEALS

Shaft Diameters	Stern Tube Diameters	Type A Seal Retail Price	PRO Seal Retail Price	Type B Seal Retail Price
3/4", 7/8" 20mm, 22mm	1 1/4", 1 1/2", 1 3/4" , 2", 2 1/4"	\$285.00	—	—
	Over Sized (2 1/2")	\$310.00	—	—
1", 1 1/8" 25mm, 28mm, 30mm	1 1/4", 1 1/2", 1 3/4" , 2", 2 1/4"	\$295.00	—	—
	Over Sized (2 1/2")	\$325.00	—	—
1 1/4", 1 3/8" 32mm, 35mm	1 3/4", 2" , 2 1/4", 2 1/2"	\$340.00	\$410.00	—
	Over Sized (2 3/4", 3" , 3 1/4", 3 1/2")	\$370.00	\$450.00	—
1 1/2", 1 5/8" 38mm, 40mm	2", 2 1/4", 2 1/2" , 2 3/4", 3" , 3 1/4", 3 1/2"	\$450.00	\$540.00	—
	Over Sized (3 3/4" , 4")	\$525.00	\$625.00	—
1 3/4" 45mm	2 1/4", 2 1/2" , 2 3/4", 3" , 3 1/4", 3 1/2"	\$490.00	\$610.00	—
	Over Sized (3 3/4" , 4")	\$575.00	\$705.00	—
2" 50mm, 55mm	2 1/2" , 2 3/4", 3" , 3 1/4", 3 1/2"	\$575.00	\$705.00	—
	Over Sized (3 3/4" , 4")	\$655.00	\$795.00	—
2 1/4", 2 1/2" 60mm, 65mm	3 1/4", 3 1/2" , 3 3/4" , 4"	\$655.00	\$865.00 *	—
	Over Sized (4 1/4", 4 1/2" , 4 3/4", 5")	\$740.00	\$960.00 *	—
2 3/4" 70mm	4", 4 1/4", 4 1/2" , 4 3/4", 5"	\$830.00	\$1,065.00 *	—
	Over Sized (5 1/4" , 5 1/2", 5 3/4", 6")	\$1,055.00	\$1,340.00 *	—
3" 75mm, 80mm	4", 4 1/4", 4 1/2" , 4 3/4", 5"	\$940.00	\$1,190.00 *	—
	Over Sized (5 1/4" , 5 1/2", 5 3/4", 6")	\$1,175.00	\$1,475.00 *	—
3 1/4", 3 1/2" 85mm, 90mm	4 1/2", 4 3/4", 5", 5 1/4" , 5 1/2", 5 3/4", 6"	\$1,620.00	\$1,935.00 *	—
	Over Sized (6 1/4", 6 1/2", 6 3/4", 7")	\$2,385.00	\$2,590.00 *	—
3 5/8", 3 3/4" 95mm	4 1/2", 4 3/4", 5", 5 1/4" , 5 1/2", 5 3/4", 6"	\$1,785.00	\$2,380.00 *	—
	Over Sized (6 1/4", 6 1/2", 6 3/4", 7")	\$2,560.00	\$3,040.00 *	—
4", 100mm	5" - 7"	—	—	\$4,500.00 *
4 1/4", 105mm, 110mm	5" - 7"	—	—	\$4,750.00 *
4 1/2", 115mm	5" - 7"	—	—	\$5,000.00 *
4 3/4", 120mm	6" - 8 5/8"	—	—	\$5,250.00 *
5", 5 1/4", 125mm, 130mm	6" - 8 5/8"	—	—	\$5,500.00 *
5 1/2", 140mm	6" - 8 5/8"	—	—	\$6,000.00 *
6", 150mm	6" - 8 5/8"	—	—	\$6,500.00 *

Prices effective January 1, 2018 and subject to change without notice.

Bold stern tube sizes means no reducer is used for the bellow.

* Comes with bellow rings

How To Determine The Part Number

Example 1 (Type A or B) : 02-112-212 Example 2 (PRO): 03-25M-214

112 = 1 1/2" Shaft Diameter

25M = 25mm Shaft Diameter

212 = 2 1/2" Stern Tube Diameter

214 = 2 1/4" Stern Tube Diameter

PSS MAINTENANCE KITS

Includes bellow, o-rings (2qty) , set screws (5qty), hose clamps (4qty), Clamp Jackets (4qty), allen wrench and thread lock.

Shaft Diameters	Stern Tube Diameters	Type A Seal Retail Price	PRO Seal Retail Price	Type B Seal Retail Price
3/4", 7/8" 20mm, 22mm	1 1/4", 1 1/2", 1 3/4" , 2", 2 1/4"	\$87.00	—	—
	Over Sized (2 1/2")	\$112.00	—	—
1", 1 1/8" 25mm, 28mm, 30mm	1 1/4", 1 1/2", 1 3/4" , 2", 2 1/4"	\$87.00	—	—
	Over Sized (2 1/2")	\$112.00	—	—
1 1/4", 1 3/8" 32mm, 35mm	1 3/4", 2" , 2 1/4", 2 1/2"	\$112.00	\$145.00	—
	Over Sized (2 3/4", 3" , 3 1/4", 3 1/2")	\$143.00	\$180.00	—
1 1/2", 1 5/8" 38mm, 40mm	2", 2 1/4", 2 1/2" , 2 3/4", 3" , 3 1/4", 3 1/2"	\$143.00	\$180.00	—
	Over Sized (3 3/4" , 4")	\$205.00	\$255.00	—
1 3/4" 45mm	2 1/4", 2 1/2", 2 3/4", 3" , 3 1/4", 3 1/2"	\$143.00	\$180.00	—
	Over Sized (3 3/4" , 4")	\$205.00	\$255.00	—
2" 50mm, 55mm	2 1/2" , 2 3/4", 3" , 3 1/4", 3 1/2"	\$143.00	\$180.00	—
	Over Sized (3 3/4" , 4")	\$205.00	\$255.00	—
2 1/4", 2 1/2" 60mm, 65mm	3 1/4", 3 1/2" , 3 3/4" , 4"	\$203.00	\$255.00 *	—
	Over Sized (4 1/4", 4 1/2" , 4 3/4", 5")	\$290.00	\$350.00 *	—
2 3/4" 70mm	4", 4 1/4", 4 1/2" , 4 3/4", 5"	\$290.00	\$350.00 *	—
	Over Sized (5 1/4" , 5 1/2", 5 3/4", 6")	\$570.00	\$685.00 *	—
3" 75mm, 80mm	4", 4 1/4", 4 1/2" , 4 3/4", 5"	\$290.00	\$350.00 *	—
	Over Sized (5 1/4" , 5 1/2", 5 3/4", 6")	\$570.00	\$685.00 *	—
3 1/4", 3 1/2" 85mm, 90mm	4 1/2", 4 3/4", 5", 5 1/4" , 5 1/2", 5 3/4", 6"	\$570.00	\$685.00 *	—
3 5/8", 3 3/4" 95mm	4 1/2", 4 3/4", 5", 5 1/4" , 5 1/2", 5 3/4", 6"	\$570.00	\$685.00 *	—
4" 100mm	5" - 7"	—	—	\$875.00 *
4 1/4" 105mm, 110mm	5" - 7"	—	—	\$875.00 *
4 1/2" 115mm	5" - 7"	—	—	\$875.00 *
4 3/4" 120mm,	6" - 8 5/8"	—	—	\$1,135.00 *
5", 5 1/4" 125mm, 130mm	6" - 8 5/8"	—	—	\$1,135.00 *
5 1/2" 140mm	6" - 8 5/8"	—	—	\$1,135.00 *
6" 150mm	6" - 8 5/8"	—	—	\$1,135.00 *

Prices effective January 1, 2018 and subject to change without notice.

Bold stern tube sizes means no reducer is used for the bellow.

* Comes with bellow rings

How To Determine The Part Number

Example 1 (Type A or B) : 07-**112**-**212**R Example 2 (PRO): 07-**25M**-**214**PR

112 = 1 1/2" Shaft Diameter

25M = 25mm Shaft Diameter

212 = 2 1/2" Stern Tube Diameter

214 = 2 1/4" Stern Tube Diameter

O-RING KITS

Includes o-rings (2qty), set screws (5qty), allen wrench, thread lock and Clamp Jackets (4qty).

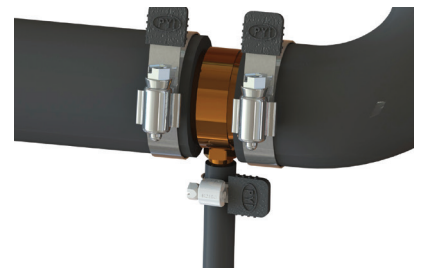
Shaft Diameters	Part #	Retail Price	Shaft Diameters	Part #	Retail Price
¾" (20mm)	07-N03-4	\$4.50	2" (50mm)	07-N20-0	\$5.65
7/8" (22mm)	07-N07-8	\$4.50	2¼" (55mm)	07-N21-4	\$5.65
1" (25mm)	07-N10-0	\$4.50	60mm	07-N60-M	\$5.65
1 1/8" (28mm)	07-N11-8	\$4.50	2½" (65mm)	07-N21-2	\$5.65
30mm	07-N30-M	\$4.75	2¾" (70mm)	07-N23-4	\$5.65
1¼" (32mm)	07-N11-4	\$4.75	3" (75mm)	07-N30-0	\$5.65
13/8" 35mm	07-N13-8	\$4.75	3¼" (80mm)	07-N31-4	\$5.65
1½" (38mm)	07-N11-2	\$5.55	85mm	07-N85-M	\$5.95
15/8" (40mm)	07-N40-M	\$5.55	3½" (90mm)	07-N31-2	\$5.95
1¾" (45mm)	07-N13-4	\$5.55	3¾" (95mm)	07-N33-4	\$5.95

T-ADAPTER KITS

Inside Diameter Hose	Part #	Retail Price
¾"	07-KIT-034	\$48.50
1"	07-KIT-100	\$48.50
1¼"	07-KIT-114	\$48.50
1½"	07-KIT-112	\$53.50

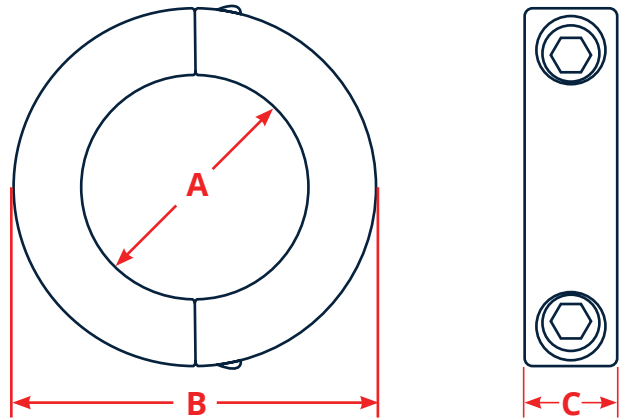
PYI offers T-Kits to help facilitate the installation of the PSS Shaft Seal. These T-Kits enable the installer to tee into the raw water discharge hose and plumb water to the hose barb fitting of the PSS

Shaft Seal. Some examples of water pick-up points are: between the heat exchanger and riser, between oil cooler and heat exchanger and between the water pump and oil cooler.



SHAFT RETENTION COLLARS

A	B	C	Part #	Retail Price
¾"	1½"	½"	07-SRC-034	\$20.00
7/8"	1 5/8"	½"	07-SRC-078	\$25.00
1"	1¾"	½"	07-SRC-100	\$27.00
1 1/8"	1 7/8"	½"	07-SRC-118	\$27.00
1¼"	2 1/16"	½"	07-SRC-114	\$30.00
1 3/8"	2¼"	9/16"	07-SRC-138	\$40.00
1½"	2 3/8"	9/16"	07-SRC-112	\$50.00
1¾"	2¾"	11/16"	07-SRC-134	\$80.00
2"	3"	11/16"	07-SRC-200	\$90.00
2¼"	3¼"	¾"	07-SRC-214	\$120.00
2½"	3¾"	¾"	07-SRC-212	\$160.00
2¾"	4"	7/8"	07-SRC-234	\$175.00
3"	4¼"	7/8"	07-SRC-300	\$190.00
25mm	45mm	15mm	07-SRC-25M	\$30.00
30mm	54mm	15mm	07-SRC-30M	\$40.00
35mm	57mm	15mm	07-SRC-35M	\$50.00
40mm	60mm	15mm	07-SRC-40M	\$65.00
45mm	73mm	19mm	07-SRC-45M	\$85.00
50mm	78mm	19mm	07-SRC-50M	\$120.00
55mm	82mm	19mm	07-SRC-55M	\$135.00
60mm	88mm	19mm	07-SRC-60M	\$140.00
65mm	93mm	19mm	07-SRC-65M	\$160.00
70mm	98mm	19mm	07-SRC-70M	\$170.00
75mm	103mm	19mm	07-SRC-75M	\$215.00
80mm	108mm	19mm	07-SRC-80M	\$215.00



SET SCREWS

Shaft Diameters	Part #	Description	Retail Price
¾" - 1 3/8"	07-014-PLAIN	¼"x20 set screw	\$0.74
1½" - 3¾"	07-038-PLAIN	3/8"x16 set screw	\$0.95
N/A	07-LOC-121	Blue thread lock (only ¾"-3¾" shafts)	\$3.25

PSS RUDDER SEAL

For rudders $\frac{3}{4}$ " to 2" (20mm - 55mm) diameters



How To Determine The Part Number

Example 1: 01-112-212RP

112 = 1½" Rudder Post Dia.

212 = 2½" Tube Dia.

Example 2: 01-25M-214RP

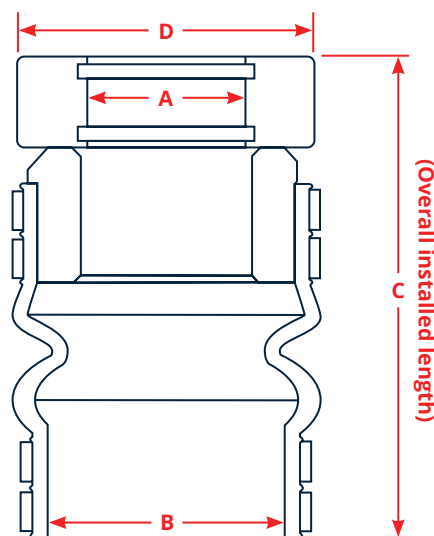
25M = 25mm Rudder Post Dia.

214 = 2¼" Tube Dia.

TECHNICAL SPECIFICATIONS

Temperature Limits	5 to 225°F (-15 to 107°C)
Pressure Limits	15 PSI (1 BAR)
Shaft RPM Limits	10,000 RPM
Carbon Graphite	Lapped to 4 HLB (0.000044" tolerance)
316 SS	Faced to 9 Ra
Bellow Material	Mandrel formed silicone / fabric

- For commercial and pleasure boats, for shafts $\frac{3}{4}$ " to 2" (20mm to 55mm). Larger sizes on request.



PSS RUDDER SEAL IMPERIAL SIZES

Rudder Post Diameter (A)	Tube Diameter (B)	Approx. Compressed Length (C)	D	Retail Price
$\frac{3}{4}$ ", $\frac{7}{8}$ ", 1", 1½"	1¾", 2", 2¼"	5½" - 5¼"	2.375"	\$295.00
1¼", 1¾"	2", 2¼", 2½"	5½" - 5¼"	2.875"	\$340.00
1½", 1¾"	2", 2¼", 2½"	5½" - 5¼"	3.75"	\$450.00
1¾"	2", 2¼", 2½"	5½" - 5¼"	3.75"	\$490.00
2"	2¼", 2½"	5½" - 5¼"	3.75"	\$575.00

PSS RUDDER SEAL METRIC SIZES (mm)

Rudder Post Diameter (A)	Tube Diameter (B)	Approx. Compressed Length (C)	D	Retail Price
20, 22, 25, 28, 30	1¾", 2", 2¼"	5½" - 5¼"	2.375"	\$295.00
32, 35	2", 2¼", 2½"	5½" - 5¼"	2.875"	\$340.00
38, 40	2", 2¼", 2½"	5½" - 5¼"	3.75"	\$450.00
45	2", 2¼", 2½"	5½" - 5¼"	3.75"	\$490.00
50, 55	2¼", 2½"	5½" - 5¼"	3.75"	\$575.00

PYI Inc.

12532 Beverly Park Road

Lynnwood, WA 98087

Tel: 425-355-3669

www.pyiinc.com

Get social with us!



01-080218