

COMPLETE MOUNTING SOLUTIONS

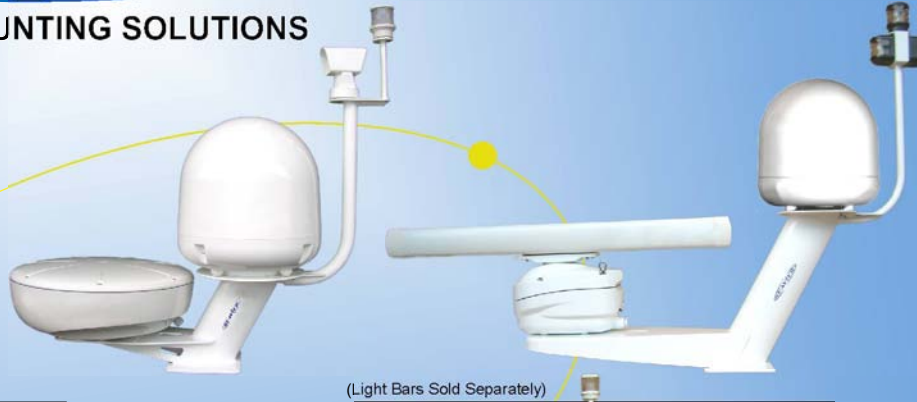
Dual Mounts

PMA-DM1-TT250
For Fb250 / F33 / F33+
& 2kW or 4kW radar domes

PMA-DM1-GXF
For Fb500 / F55+ and
2kW or 4kW radar domes

PMA-DM2-TT250
For Fb250 / F33 / F33+
& Open Array Radar up to 4'

PMA-DM2-GXF
For Fb500 / F55+ and
Open Array Radar up to 4'



(Light Bars Sold Separately)

Adjustable Radar Arch

ARCH-1 SERIES BRIDGES OVER ANY CLOSED RADOME

ARCH-1-TT250 (Plate to fit Fb250 / F33 / F33+)

ARCH-1-GXF (Plate to fit Fb500 / F55+)

ARCH-2 SERIES BRIDGES OVER ANY OA UP TO 4'

ARCH-2-TT250 (Plate to fit Fb250 / F33 / F33+)

ARCH-2-GXF (Plate to fit Fb500 / F55+)

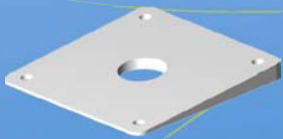


(Light Bars Sold Separately)

Dual Mount / Adjustable Arch Accessories

Base Wedges

PM-W-10 (4° for 10x10 base)



DM-LTB-BOX

(1 1/4" Light bar w/ box top to fit Aqua Sig. Series 40/41 lights. Lights available upon special order.)

DM-LTB-100

(1 1/4" Light bar w/ Perko 1197 Masthead / All-Round Light Installed)

DM-LTB-FN

(2" Light bar For Flir Navigator & Aqua Sig. Series 40/41 Lights)

DM-LTB

(1 1/4" Light bar with Standard 1 x 14 Threaded Top & Donut Adapter)



Satellite Power Mounts



Aft Leaning Power Mount

PMA-5-7A+SV-TTADAPT (5" Tall/ Fits Fb250 (14"))
PMA-12-7A+SV-TTADAPT (12" Tall/ Fits Fb250 (14"))

PMA-5-GXF (5" Tall/ Fits Fb500 / F55+)
PMA-12-GXF (12" Tall/ Fits Fb500 / F55+)
PMA-18-GXF (18" Tall/ Fits Fb500 / F55+)

Mast Platforms



SM-10-A+SV-TTADAPT
Fb250 / F33 / F33+

Low Profile Satdome Adapters



AMA-10+SV-TTADAPT

(Satdome adapter for Fb250 / F33 / F33+)

AMA-GXF

(Satdome adapter for Fb500 / F55+)

AMA-W

(Adjustable wedge from 0 to 12 deg.)





COMPLETE MOUNTING SOLUTIONS

Satellite Antenna Pole Mounts

Our Satellite Antenna Pole Mounts are constructed from high quality marine grade aluminum tubing with an Aluminum Dia Cast Base and Top, then treated with an anodized primer and then finished with a brilliant white powder coated finish. Available in 9" to 10' lengths. The last number at the end of the part number indicates the Pole length desired.

Pole Mount, you determine the height ** (cast top and cast bottom)

AP-3A+SV-TTADAPT(1' - 10') (3" dia. Pole for Fb250 / F33 / F33+)

AP-4GXF- (1'-10') (4" dia. Pole for Fb500 / F55+)

****Note: (1'-10') = You pick the height of your pole from 1' up to 10'.**



(AP-4GXF-1)

Custom Mounts SEAVIEW can design and fabricate for most any custom application. Please contact us for a quote.

