



## COMPLETE MOUNTING SOLUTIONS

### Dual Mounts

#### PMA-DM1-GXF

For VDO Ocean Line 132 & 2kW or 4kW radar domes

#### PMA-DM1-VD1

For VDO Ocean Line 337 & 2kW or 4kW radar domes

#### PMA-DM1-VD2

For VDO Ocean Line 345 / 360 & 2kW or 4kW radar domes



#### PMA-DM2-GXF

For VDO Ocean Line 132 & 4' Open Array

#### PMA-DM2-VD1

4' Open Array & VDO Ocean Line 337

#### PMA-DM2-VD2

4' Open Array & VDO Ocean Line 345 / 360

### Adjustable Radar Arch

#### ARCH-1 SERIES BRIDGES OVER ANY CLOSED RADOME

##### ARCH-1-GXF

(Plate to fit VDO Ocean Line 132)

##### ARCH-1-VD1

(Plate to fit VDO Ocean Line 337)

##### ARCH-1-VD2

(Plate to fit VDO Ocean Line 345 / 360)

#### ARCH-2 SERIES BRIDGES OVER ANY OA UP TO 4'

##### ARCH-2-GXF

(Plate to fit VDO Ocean Line 132)

##### ARCH-2-VD1

(Plate to fit VDO Ocean Line 337)

##### ARCH-2-VD2

(Plate to fit VDO Ocean Line 345 / 360)

(Light Bars Sold Separately)

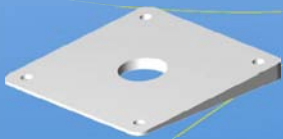
#### ARCH-2-VD2



### Dual Mount / Adjustable Arch Accessories

#### Base Wedges

PM-W-10 (4° for 10x10 base)



#### DM-LTB-BOX

(1 1/4" Light bar w/ box top to fit Aqua Sig. Series 40/41 lights. Lights available upon special order.)

#### DM-LTB-100

(1 1/4" Lightbar w/ Perko 1197 Masthead / All-Round Light Installed)

#### DM-LTB-FN

(1 1/4" Light bar For Flir Navigator & Aqua Sig. Series 40/41 Lights)

#### DM-LTB

(1 1/4" Light bar with Standard 1 x 14 Threaded Top & Donut Adapter)



### Satellite Power Mounts



#### Aft Leaning Power Mount

- PMA-5-GXF (5" Tall/ Fits VDO Ocean Line 132)
- PMA-5-VD1 (5" Tall/ Fits VDO Ocean Line 337)
- PMA-5-VD2 (5" Tall/ Fits VDO Ocean Line 345 / 360)
- PMA-12-GXF (12" Tall/ Fits VDO Ocean Line 132)
- PMA-12-VD1 (12" Tall/ Fits VDO Ocean Line 337)
- PMA-12-VD2 (12" Tall/ Fits VDO Ocean Line 345 / 360)
- PMA-18-GXF (18" Tall/ Fits VDO Ocean Line 132)
- PMA-18-VD1 (18" Tall/ Fits VDO Ocean Line 337)
- PMA-18-VD2 (18" Tall/ Fits VDO Ocean Line 345 / 360)



#### SM-18-VD1

Fits VDO Ocean Line 337

### Mast Platforms

### Low Profile Satdome Adapters



**AMA-GXF** (Satdome adapter for VDO Ocean Line 132)

**AMA-VD1** (Satdome adapter for VDO Ocean Line 337)

**AMA-VD2** (Satdome adapter for VDO Ocean Line 345 / 360)

#### AMA-W

(Adjustable wedge from 0 to 12 deg.)





**Satellite Antenna Pole Mounts**

Our Satellite Antenna Pole Mounts are constructed from high quality marine grade aluminum tubing with an Aluminum Dia Cast Base and Top, then treated with an anodized primer and then finished with a brilliant white powder coated finish. Available in 9" to 10' lengths. The last number at the end of the part number indicates the Pole length desired.

**Pole Mount, you determine the height \*\* (cast top and cast bottom )**

- AP-3-GXF (1' - 10') (3" dia. Pole for VDO Ocean Line 132)
- AP-3-VD1 (1' - 10') (3" dia. Pole for VDO Ocean Line 337)
- AP-4-VD2 (1' - 10') (4" dia. Pole for VDO Ocean Line 345 / 360)



\*\*Note: (1'-10') = You pick the height of your pole from 1' up to 10'. For example a 2' pole for VDO Ocean Line (37cm) is part # AP-3-VD1-2.

**Custom Mounts** SEAVIEW can design and fabricate for most any custom application. Please contact us for a quote.

**VDO Reference Guide**

VDO		
MODEL	DIAMETER	ORDER CODE
Ocean Line 132	32cm	ITA-082-000-132
Ocean Line 337	37cm	ITA-082-000-337
Ocean Line 345	45cm	ITA-082-000-345
Ocean Line 360	60cm	ITA-082-000-360



Seaview Europe  
 ZI du Capitou, 85 rue Louis Lepine  
 83600 Frejus - France

Tel/Fax: +33494532770  
 Mob: +330627386837  
 www.seavieweurope.com

