

COMPLETE MOUNTING SOLUTIONS

Dual Mounts

PMA-DM1

Any 2kW or 4kW domes & KNS S4

PMA-DM1-M3

Any 2kW or 4kW domes & KNS S3

PMA-DM1-M7

Any 2kW or 4kW domes & KNS S6



PMA-DM2

Up to 4' open array & KNS S4

PMA-DM2-M3

Up to 4' open array & KNS S3

PMA-DM2-M7

Up to 4' open array & KNS S6

(Light Bars Sold Separately)

Adjustable Radar Arch

ARCH-1 SERIES BRIDGES OVER ANY CLOSED RADOME

ARCH-1 (Plate to fit KNS S4)

ARCH-1M3 (Plate to fit KNS S3)

ARCH-1M7 (Plate to fit KNS S6)

ARCH-2 SERIES BRIDGES OVER ANY OA UP TO 4'

ARCH-2 (Plate to fit KNS S4)

ARCH-2M3 (Plate to fit KNS S3)

ARCH-2M7 (Plate to fit KNS S6)

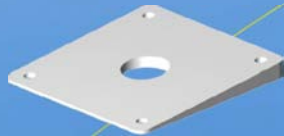


(Light Bars Sold Separately)

Dual Mount / Adjustable Arch Accessories

Base Wedges

- PM-W2-8 (2° for 8x8 Base)
- PM-W4-8 (4° for 8x8 Base)
- PM-W6-8 (6° for 8x8 Base)
- PM-W4-10 (4° for 10x10 Base)



DM-LTB-BOX

(1 1/4" Light bar w/ box top to fit Aqua Sig. Series 40/41 lights. Lights available upon special order.)

DM-LTB-BOX-M7

(Fits Dual Mounts & Arches ending in M7. Please call if using different lights.)

DM-LTB-100

(1 1/4" Light bar w/ Perko 1197 Masthead/ All-Round Light Installed)

DM-LTB-FN

(1 1/4" Light bar For Flir Navigator & Aqua Sig. Series 40/41 Lights)

DM-LTB-FN-M7

(Fits Dual Mounts & Arches ending in M7)

(Light Bars Sold Separately)



Low Profile Satdome Adapters



AMA-16

(Satdome adapter for KNS S3)

AMA-18

(Satdome adapter for KNS S4)

AMA-24

(Satdome adapter for KNS S6)

AMA-W

(Adjustable wedge from 0 to 12 deg. For AMA-16/18/24)



Standard Power Mounts

(Not Light/GPS bar capable)



Aft Leaning Power Mounts

- 5" PMA-5M-8 (KNS S3)
- 12" PMA-12M-8 (KNS S3)
- 12" PMA-12-10B (KNS S4)
- 12" PMA-12-10D (KNS S6)
- 18" PMA-18-10B (KNS S4)
- 18" PMA-18M-8 (KNS S3)



Mast Platforms

SM-18-A

KNS S3
KNS S4





Satellite Antenna Pole Mounts

Our Satellite Antenna Pole Mounts are constructed from high quality marine grade aluminum tubing with an Aluminum Dia Cast Base and Top, then treated with an anodized primer and then finished with a brilliant white powder coated finish. Available in 9" to 10' lengths. The last number at the end of the part number indicates the Pole length desired.

Fixed Pole Mount (welded top and bottom plates)

- AM-M3 (3" dia. Pole 3" Tall for KNS S3)
- AM-M5 (3.5" dia. Pole 5" Tall for KNS S4)

Pole Mount, you determine the height ** (cast top and cast bottom)

- AP-3M3- (1' - 10') (3" dia. Pole for KNS S3)
- AP-4B- (1' - 10') (4" dia. Pole for KNS S4)
- AP-4D- (1' - 10') (4" dia. Pole for KNS S6)
- AP-4R-M3 (1'-10') (4" dia. Pole for Raymarine dome & KNS S3)
- AP-4U-M3 (1'-10') (4" dia. Pole for Furuno, JRC or Koden 2kW & KNS S3)

****Note: (1'-10') = You pick the height of your pole from 1' up to 10'. For example a 2' pole for KNS S4 is part# AP-4B-2.**



(AP-4B-1)

Custom Mounts SEAVIEW can design and fabricate for most any custom application. Please contact us for a quote.

