

COMPLETE MOUNTING SOLUTIONS

Dual Mounts

PMA-DM1

2kW & 4kW domes and 18 - 20" Satdomes.

PMA-DM1-M3

2kW & 4kW domes & 14"/15" Satdomes



PMA-DM2

4' Open Array & 18 - 20" Satdomes

PMA-DM2-M3

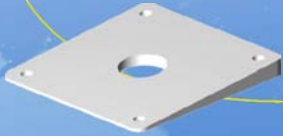
4' Open Array & 14"/15" Satdomes

(Light Bars Sold Separately)

Dual Mount / Adjustable Arch Accessories

Base Wedges

PM-W10 (4° for 10x10 base)



DM-LTB-BOX

(1 1/4" Light bar w/ box top to fit Aqua Sig. Series 40/41 lights. Lights available upon special order.)



DM-LTB-100

(1 1/4" Light bar w/ Perko 1197 Masthead/ All-Round Light Installed)



NEW

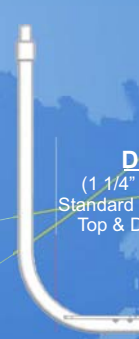
DM-LTB-FN

(1 1/4" Light bar For Flir Navigator & Aqua Sig. Series 40/41 Lights)



DM-LTB

(1 1/4" Light bar with Standard 1 x 14 Threaded Top & Donut Adapter)



Power Mounts Plus with Light/GPS Bar Option

PMA-5U-7LSS



Aft For 20 - 24"

5" PMA-5U-7L	16" PMA-16U-7L
5" PMA-5U-7LSS	24" PMA-24U-8L
10" PMA-10U-7L	36" PMA-36U-8L

Fwd For 20" Domes

5" PMF-5U-7L
10" PMF-10U-7L

(Light Bars Sold Separately)

Standard Power Mounts (Not Light/GPS bar capable)



Aft For 20 - 24" Domes

5" PMA-5U-7

Fwd For 20 - 24" Domes

5" PMF-5U-7
10" PMF-10U-7

Radar Wedge

SEAVIEW 4° radar wedges made from King Starboard® plastic designed to be used directly between the radome and the mounting surface when extra height is not required. This will compensate for deck angle or planing attitude of the boat!

RW4-1	20" Domes
RW4-2	24" Dome
RW4-3	4' Open Array



Power Mount Accessories

Light Bar

LTB-100 (Fits Power Mounts Plus Models. Comes with Perko 1197 all-round light)

Light/GPS Bar

LTB (Fits Power Mounts Plus Models)
LTB-SS (Fits S.S. Power Mount)

LTB & V-Tail Adapters

PM-U1A (Dual mount for Light/GPS)
PM-U2A (Triple mount for Light/dual GPS)



Base Wedges

PM-W2-7 (2° for 7x7 Base)
PM-W4-7 (4° for 7x7 Base)
PM-W6-7 (6° for 7x7 Base)
PM-W2-8 (2° for 8x8 Base)
PM-W4-8 (4° for 8x8 Base)
PM-W6-8 (6° for 8x8 Base)

NEW



Flood Light kit for LTB

PM-1LT-DLX
PM-1LT-DLX (for Deluxe Light)
(Fits LTB for Power Mount & Pole)



Hinged Adapters

PM-H7 (Fits 7x7 Base for 5", 10", 16" models)
PM-H8 (Fits 8x8 Base for 24", 36" models)

Adjustable Radar Arch

ARCH-1 SERIES BRIDGES OVER ANY CLOSED RADOME

- ARCH-1** (Plate to fit 18" Satdome)
- ARCH-1M3** (Plate to fit KVH M2/M3, Ray 37STV, SeaTel Coastal 14 & Sea-King 9815RJ)
- ARCH-1M7** (Plate to fit KVH 24" & Ray 60 STV)

ARCH-2 SERIES BRIDGES OVER ANY OA UP TO 4'

- ARCH-2** (Plate to fit 18" Satdome)
- ARCH-2M3** (Plate to fit KVH M2/M3, Ray 37STV, SeaTel Coastal 14 & Sea-King 9815RJ)
- ARCH-2M7** (Plate to fit KVH 24" & Ray 60 STV)



ARCH-2



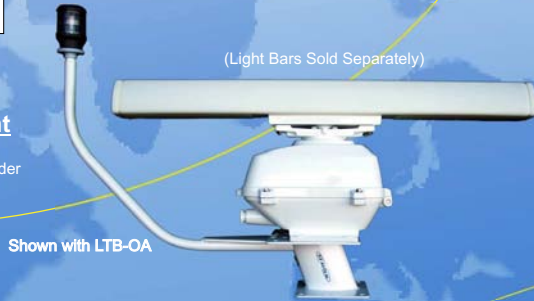
ARCH-1

(Light Bars Sold Separately)

Open Array Power Mounts

6" AFT Open Array Power Mount

PMA-6NO-8L (4' & 6' Open Array)
*Taller Open Array Mounts available by special order



(Light Bars Sold Separately)

Shown with LTB-OA

LTB-OA (Open Array Light Bar)

Heavy Duty Open Array Light Bar (up to 4' OA)
*sold separately

LTB-OA6 (6' Open Array Light Bar)

Heavy Duty Open Array Light Bar (for 6' OA)
*sold separately



Mast Platforms



20" Domes
SM-18-U



24" Dome
SM-24-U



S.S Radar Guards
SMG-18-U (18-20" domes)
SMG-24-U (24" domes)

Tapered Mast with Spreader (PMA-100 & PMA-200)



Tapered radar mast, swept aft with spreaders. The spreaders have threaded adapters for GPS, antennas etc. The top plate is drilled and tapped to accept an Aqua Signal Ser. 40 light. The base plate measures 10"x10" and the mast height is 30". Lights not included.



PMA-100

30" peak ht.

21" spread ht.

8" radar ht.

UNIVERSALRADAR
PLATE TO FIT 2kW
& 4kW DOMES

PMA-100 Shown with radar, Light (not included)



PMA-200

UNIVERSALRADAR
PLATE TO FIT ALL
OPEN ARRAY RADARS
UP TO 4'

PMA-200 Shown with radar, GPS, Light (not included)