

COMPLETE MOUNTING SOLUTIONS

Dual Mounts

PMA-DM2

4' Open Array & 18"-20" Satdomes

PMA-DM2-M3

4' Open Array & 15"-16" Satdomes

PMA-DM1

18"-24" Radomes & 18"-20" Satdomes

PMA-DM1-M3

18"-24" Radomes & 15"-16" Satdomes

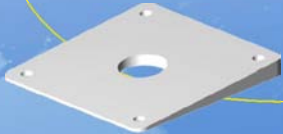


(Light Bars Sold Separately)

Dual Mount / Adjustable Arch Accessories

Base Wedges

PM-W10 (4° for 10x10 base)



DM-LTB-BOX

(1 1/4" Light bar w/ box top to fit Aqua Sig. Series 40/41 lights. Lights available upon special order.)



DM-LTB-100

(1 1/4" Light bar w/ Perko 1197 Masthead/ All-Round Light Installed)



DM-LTB-FN

(1 1/4" Light bar For Flir Navigator & Aqua Sig. Series 40/41 Lights)



DM-LTB

(1 1/4" Light bar with Standard 1 x 14 Threaded Top & Donut Adapter)

NEW



Power Mounts Plus with Light/GPS Bar Option



Aft Leaning Power Mounts

5" PMA-5G-7L
5" PMA-5G-7LSS (stainless steel)
10" PMA-10G-7L
16" PMA-16G-7L

(Light Bars Sold Separately)

Fwd Leaning Power Mounts

5" PMF-5G-7L



(PMA-5G-7L Show with no LTB)

Open Array Power Mounts

6" AFT Open Array Power Mount

PMA-6GO-8L (Garmin 4' & 6' Open Array)

*Taller Open Array Mounts available by special order

LTB-OA (Open Array Light Bar)

Heavy Duty Light Open Array Light Bar

*sold separately

LTB-OA6 (6' Open Array Light Bar)

Heavy Duty Open Array Light Bar (for 6' OA)

*sold separately



(Light Bars Sold Separately)

Shown with custom LTB-OA6

Radar Wedge

SEAVIEW 4° radar wedges made from KingStarboard® plastic designed to be used directly between the radome and the mounting surface when extra height is not required. This will compensate for deck angle or planing attitude of the boat!

RW4-2 18-24" Domes

RW4-3 Open Array



Power Mount Accessories

Light Bar

LTB-100 (Fits Power Mounts Plus Models. Comes with Perko 1197 all-round light)

Light/GPS Bar

LTB (Fits Power Mounts Plus Models)

LTB-SS (Fits S.S. Power Mount)

LTB & V-Tail Adapters

PM-U1A (Dual mount for Light/GPS)
PM-U2A (Triple mount for Light/dual GPS)

Base Wedges

PM-W2-7 (2° for 7x7 Base)
PM-W4-7 (4° for 7x7 Base)
PM-W6-7 (6° for 7x7 Base)
PM-W2-8 (2° for 8x8 Base)
PM-W4-8 (4° for 8x8 Base)
PM-W6-8 (6° for 8x8 Base)

Flood Light kit for LTB

PM-1LT-DLX
PM-1LT-DLX (for Deluxe Light)
(Fits LTB for Power Mount & Pole)

Hinged Adapters

PM-H7 (Fits 7x7 Base for 5", 10", 16" models)
PM-H8 (Fits 8x8 Base for 24", 36" models)

Adjustable Radar Arch

ARCH-1 SERIES BRIDGES OVER ANY CLOSED RADOME

- ARCH-1** (Plate to fit 18"-20" Satdome)
- ARCH-1M3** (Plate to fit KVH M2/M3, Ray 37STV, SeaTel Coastal 14 & Sea-King 9815RJ)
- ARCH-1M7** (Plate to fit KVH 24" & Ray 60 STV)

ARCH-2 SERIES BRIDGES OVER ANY OA UP TO 4'

- ARCH-2** (Plate to fit 18"-20" Satdome)
- ARCH-2M3** (Plate to fit KVH M2/M3, Ray 37STV, SeaTel Coastal 14 & Sea-King 9815RJ)
- ARCH-2M7** (Plate to fit KVH 24" & Ray 60 STV)



ARCH-2



ARCH-1

(Light Bars Sold Separately)

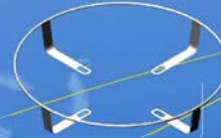
Mast Platforms

18" Garmin Domes
SM-18-R

24" & 28" Garmin Domes
SM-28-G



S.S Radar Guards
SMG-18-R (18" dome)
SMG-24-G (24" dome)



Tapered Mast with Spreader (PMA-100)



Tapered radar mast, swept aft with spreaders. The spreaders have threaded adapters for GPS, antennas etc. The top plate is drilled and tapped to accept an Aqua Signal Ser. 40 light. The base plate measures 10"x10" and the mast height is 30". Lights not included.



PMA-100

UNIVERSALRADAR
PLATE TO FIT 2kW
& 4kW DOMES

PMA-100 Shown with radar, GPS, Light (not included)



PMA-200

UNIVERSALRADAR
PLATE TO FIT ALL
OPEN ARRAY RADARS
UP TO 4'

PMA-200 Shown with radar, GPS, Light (not included)