



**COMPLETE MOUNTING SOLUTIONS**

**Dual Mounts**

**PMA-DM1**  
Any 2kW or 4kW radome & EPAK TV43/44/46

**PMA-DM1-M7**  
Any 2kW or 4kW radome & EPAK TV58/59



**PMA-DM1**

**PMA-DM2**



**PMA-DM2**  
Up to 4' open array & EPAK TV43/44/46

**PMA-DM2-M7**  
Up to 4' open array & EPAK TV58/59

(Light Bars Sold Separately)

**Adjustable Radar Arch**

**ARCH-1 SERIES BRIDGES OVER ANY CLOSED RADOME**

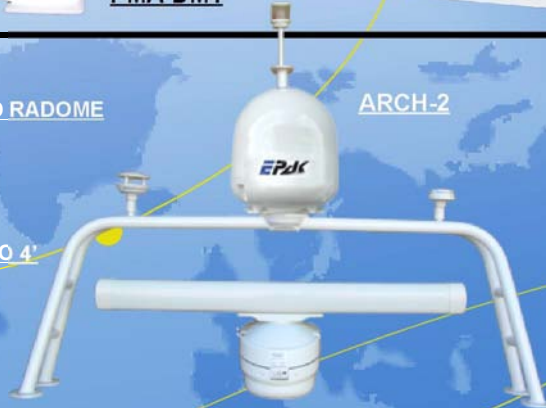
**ARCH-1** (Plate to fit EPAK TV43/44/46)

**ARCH-1M7** (Plate to fit EPAK TV58/59)

**ARCH-2 SERIES BRIDGES OVER ANY OA UP TO 4'**

**ARCH-2** (Plate to fit EPAK TV43/44/46)

**ARCH-2M7** (Plate to fit EPAK TV58/59)



**ARCH-2**



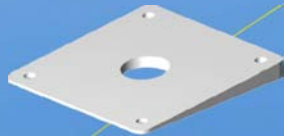
**ARCH-1**

(Light Bars Sold Separately)

**Dual Mount / Adjustable Arch Accessories**

**Base Wedges**

- PM-W2-8 (2° for 8x8 Base)
- PM-W4-8 (4° for 8x8 Base)
- PM-W6-8 (6° for 8x8 Base)
- PM-W4-10 (4° for 10x10 Base)



**DM-LTB-BOX**

(1 1/4" Light bar w/ box top to fit Aqua Sig. Series 40/41 lights. Lights available upon special order.)

**DM-LTB-BOX-M7**

(Fits Dual Mounts & Arches ending in M7. Please call if using different lights.)

**DM-LTB-100**

(1 1/4" Light bar w/ Perko 1197 Masthead/ All-Round Light Installed)



**DM-LTB-FN**

(1 1/4" Light bar For Flir Navigator & Aqua Sig. Series 40/41 Lights)

**DM-LTB-FN-M7**

(Fits Dual Mounts & Arches ending in M7)



(Light Bars Sold Separately)

**DM-LTB**  
(1 1/4" Light bar with Standard 1 x 14 Threaded Top & Donut Adapter)

**DM-LTB-M7**

(Fits Dual Mounts & Arches ending in M7)

**Low Profile Satdome Adapters**



**AMA-18**  
(Satdome adapter for EPAK TV43/44/46)

**AMA-24**  
(Satdome adapter for EPAK TV58/59)

**AMA-32**  
(Satdome adapter for EPAK TV61/90)

**AMA-W**

(Adjustable wedge from 0 to 12 deg. & fits base of Satdome Adapters)



**Standard Power Mounts**  
(Not Light/GPS bar capable)

**Aft Leaning Power Mounts**  
12" PMA-12-10B (EPAK TV43/44/46)  
12" PMA-12-10D (EPAK TV58/59)  
18" PMA-18-10B (EPAK TV43/44/46)



**Mast Platforms**

**SM-18-A**  
EPAK TV43/44/46





**Satellite Antenna Pole Mounts**

Our Satellite Antenna Pole Mounts are constructed from high quality marine grade aluminum tubing with an Aluminum Dia Cast Base and Top, then treated with an anodized primer and then finished with a brilliant white powder coated finish. Available in 9" to 10' lengths. The last number at the end of the part number indicates the Pole length desired.

**5" Fixed Pole Mount (welded top and bottom plates)**  
AM-M5 (3.5" dia. Pole 5" Tall for EPAK TV43/44/46)

**Pole Mount, you determine the height \*\* (cast top and cast bottom )**  
AP-4B- (1' - 10') (4" dia. Pole for EPAK TV43/44/46)  
AP-4D- (1' - 10') (4" dia. Pole for EPAK TV58/59)



(AM-M5)

(AP-4B-1)

**\*\*Note: (1'-10') = You pick the height of your pole from 1' up to 10'. For example a 2' pole for Satflower i4 is part# AP-4B-2.**

**Custom Mounts** SEAVIEW can design and fabricate for most any custom application. Please contact us for a quote.



PYI INC.  
12532 Beverly Park Road  
Lynnwood, WA 98087

1-800-523-7558  
www.pyiinc.com

Seaview Europe  
ZI du Capitou, 85 rue Louis Lepine  
83600 Frejus - France

Tel/Fax: +33494532770  
Mob: +330627386837  
www.seavieweurope.com

