



FLOOR ANCHOR



Floor Anchor Installed on a boat



Floor Anchor by PYI

Features:

- Made of 316L Stainless Steel and now available in Brass - will not corrode, discolor with age, or damage the wood surface.
- Floor anchors safely hold 500 lbs. per unit - 1000 lb. breaking load.
- Meet ISAF requirements for offshore boats.
- Opening mechanism is a simple bayonet style, with 1/4 turn lock and release that will not loosen with age.
- Can be opened or closed by either a coin or a flat head screwdriver. All components permanently attached - no loose pieces to drop in the bilge.

Floor Anchor

(1/2" to 3/4" floor boards)

11-FA0-34 (S.S.)

11-FA0-34B (Brass)
\$14.00 each

Floor Anchor

(7/8" to 1 1/4" floor boards)

11-FA1-00 (S.S.)

11-FA1-00B (Brass)
\$15.00 each

Floor Anchor Starter Kit

Features:

- (4 each) Floor Anchors
- Custom Countersink Cutter
- All drill bits and tap required
- Installation instructions



Starter Kit
11-FA1-00S

Floor Anchor Starter Kit

(1/2" to 3/4" floor boards)

11-FA0-34S (S.S.)

11-FA0-34SB (Brass)
Sh. Wt. 2 lb. \$78.00

Floor Anchor Starter Kit

(7/8" to 1 1/4" floor boards)

11-FA1-00S (S.S.)

11-FA1-00SB (Brass)
Sh. Wt. 2 lb. \$82.00

Floor Anchor 4 Packs

Features:

- (4 each) Floor Anchors
- Installation instructions

Floor Anchor 4 Pack

(1/2" to 3/4" floor boards)

11-FA0-344 (S.S.)

11-FA0-344B (Brass)
Sh. Wt. 2 lb. \$53.00

Floor Anchor 4 Pack

(7/8" to 1 1/4" floor boards)

11-FA1-004 (S.S.)

11-FA1-004B (Brass)
Sh. Wt. 2 lb. \$57.00

Floor Anchor 12 Packs

Features:

- (12 each) Floor Anchors
- Installation instructions

Floor Anchor 12 Pack

(1/2" to 3/4" floor boards)

11-FA0-3412 (S.S.)

11-FA0-3412B (Brass)
Sh. Wt. 2 lb. \$153.00

Floor Anchor 12 Pack

(7/8" to 1 1/4" floor boards)

11-FA1-0012 (S.S.)

11-FA1-0012B (Brass)
Sh. Wt. 2 lb. \$159.00

Floor Anchor Installation Kit

Features:

- Custom Countersink Cutter
- All drill bits and tap required
- Installation instructions

\$25.00

Floor Latch

Features:

- Flush Lifting Ring
- Spring Loaded
- Chromed Brass



\$11.00

Floor Anchors installed in a variety of panel thicknesses.



11-FA0-34
With 1/2" panels the receiver will sit flush.



11-FA0-34
With 3/4" panels you will have a small portion of the receiver above the sole.



11-FA0-34
With 1.00" panels you will have more of the receiver above the sole.



11-FA1-00
With 3/4" to 1.00" panels the receiver will sit flush.



US Office
PYI INC.
12532 Beverly Park Road
Lynnwood, WA 98087

1-800-523-7558
www.pyiinc.com

Europe Office
Seaview Europe
ZI du Capitou, 85 rue Louis Lepine
83600 Frejus - France

Tel/Fax: +33494532770
Mob: +330627386837
www.seavieweurope.com

INSTALLING THE FLOOR ANCHORS

1 The starter pack contains four Floor Anchors, a couple of drill bits, a tap and a countersink (taper cutter), which you need to make a neat job of the project. Once you have these tools in hand, you can buy additional anchors as you need them.

2 Mark out the center of the spot where you want the finished Floor Anchor to sit. Don't put it too close to the edge of the sole panel, and make sure it is closer than about $\frac{1}{2}$ " from the edge of the underlying support structure. A piece of soft plywood is shown for example here.

3 With the floor panel held or clamped firmly onto the support, drill through the panel until you reach the predetermined depth you have marked on the drill bit with masking tape. Ensure that the drill is perpendicular to the panel. The required depth is given in the instructions and varies depending on panel thickness.

4 Remove the floor panel and set it aside; then tap the hole in the floor timber or support. If you do not have the correct tap wrench you can use a small socket and ratchet handle.

5 The next step is to open out the holes in the floor panel with the 13-mm drill. A drill press is advised if you have the option. A handheld drill works fine, but make sure to keep the drill upright.

6 Using a countersink ensures that the anchor sits flush with the top surface of the floor panel. You will need to apply a fair amount of pressure, as this cuts with a reaming action. You can't drill too far, though, because the collar keeps the bit from going any deeper than is necessary.

7 Apply thin hatch tape as required to the underlying surface of the floor panel. It provides cushioning and silences any creaks and groans.

8 After blowing out any dust from the tapped hole, smear in a little epoxy with the end of a Q-tip or other small stick. Don't use too much; this is simply to make sure that the bottom half of the anchor stays put. If you use too much epoxy, it could squeeze out and glue the floor panel in place. The epoxy used here is a 5-minute epoxy to speed things up; if you use regular epoxy, let it cure overnight.

9 Spread a little epoxy on the countersunk ridges on the top anchor section.

10 While the epoxy is still wet, use a large screwdriver to thread the complete anchor through the top panel and screw it into the tapped hole beneath.

11 Screw the anchor down until the countersink is flush with the surface of the floor panel, as shown. Wipe up any epoxy that squeezes out, and allow it to cure. The job is now complete.

12 You can now release the panel with a half-turn of the screw. You can see here how the Floor Anchor works: a bayonet-type connector engages into the permanently fitted female receptacle.

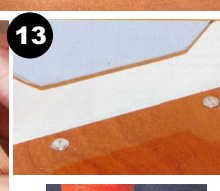
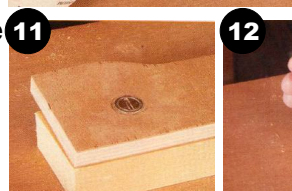
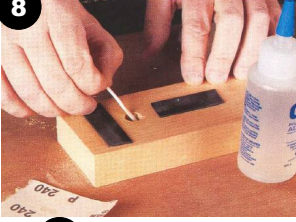
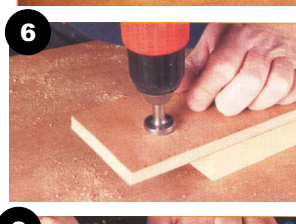
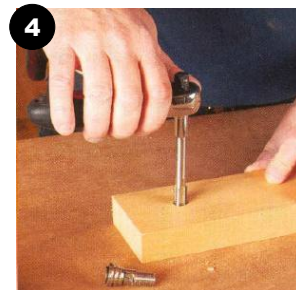
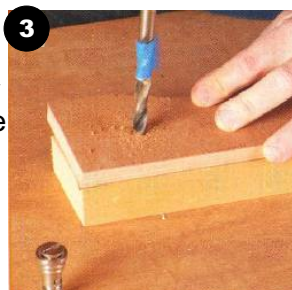
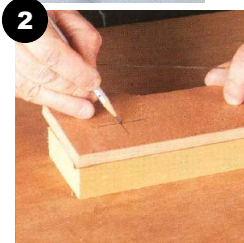
13 You should now be free of creaks and moans from the floor.

Tools Needed:

- 10-mm and 13-mm drill bits (included in the starter kits)
- Large countersink
- Pencils
- Tape measure
- Electric drill
- Wrench
- Screwdriver

Materials:

- Floor Anchors
- Q-tips
- 5-minute epoxy
- Masking Tape
- Thin hatch tape



Photos courtesy of Mark Corke. BoatWorks Fall 2006

TOP TIP

When you tape the drill bit to mark the hole depth, leave a tag of tape sticking out from the side like small flag. This will whirl around, sweeping away the sawdust when it reaches the correct depth.