



J-Boat Rudder Bearings for Retrofit

Model#	Upper	Lower	Model Notes-
J/33	067T30U(S),	067T40L(S)	
J/34	067T4HC125(S)	0641J35	Lower bearing has an integral sleeve
J/35	067T4HC125(S)	0641J35	Lower bearing has an integral sleeve
J/37	067T4HC125(S)	0641J35	Lower bearing has an integral sleeve
J/39	067T40U(S)	0641J120	Lower bearing w/sleeve for bonding to rudderpost
J/40	067T4HC125(S)	0641J35	Lower bearing has an integral sleeve
J/44	067T4HC125(S)	0641J120	Lower bearing w/sleeve for bonding to rudderpost
J/90	067T25U(S)	067T25L(S)	
J/92	067T25U(S)	067T25L(S)	
J/105	0642J105	0641J105	Lower bearing w/sleeve for bonding to rudderpost
J/120	0642J120	0641J120	Lower bearing w/sleeve for bonding to rudderpost
J/125	067T35(S)		
J/130	0642J120	0641J120	Confirm sleeve requirements for upper and lower
J/46	067T40U(S)	0641J120	Lower bearing w/sleeve for bonding to rudderpost

General note- 067Tx parts require a machined stainless bearing surface. Adding "S" to the part number will include a stainless steel sleeve with the bearing.



J/35 LOWER BEARING



J/105 UPPER & LOWER BEARING



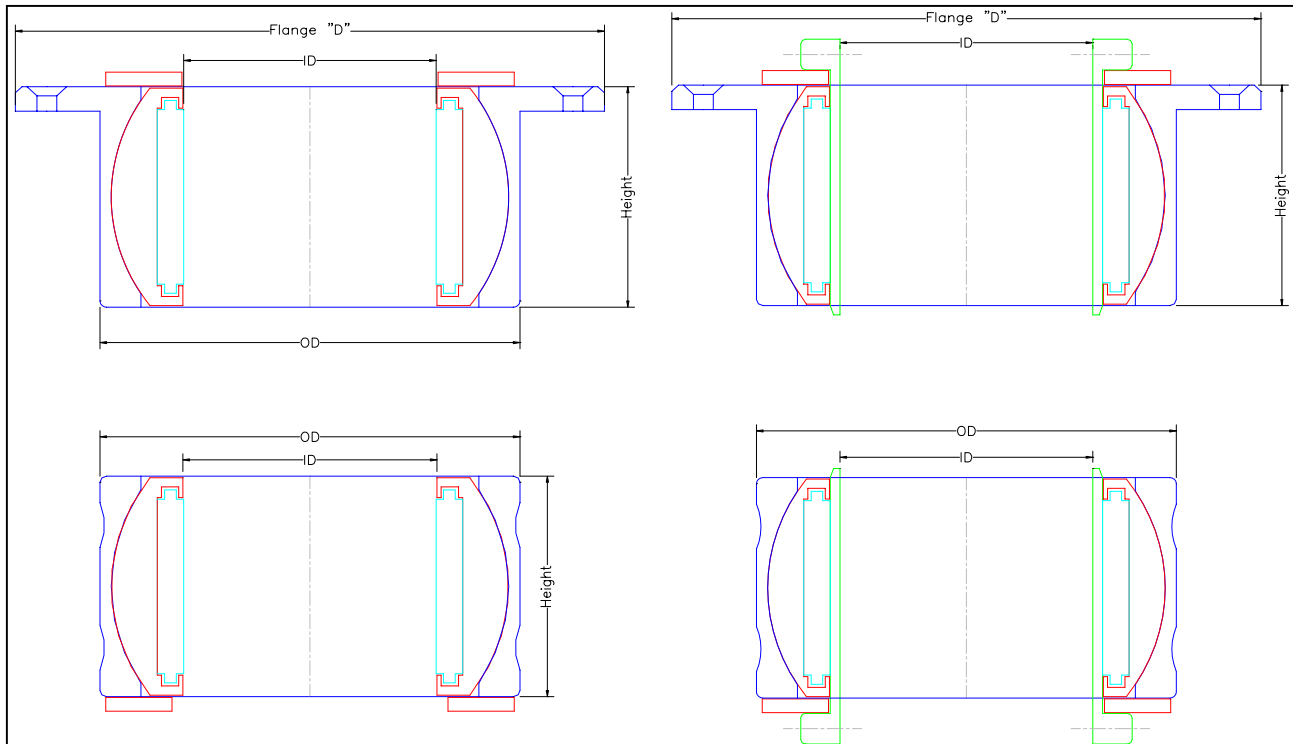
J/120 LOWER BEARING



Jefa "7T" Rudder Bearings 2009



		I.D.*	O.D.	Height	Flange "D"	List \$\$	Replace Harken#
<u>2 1/2" Inside diameter</u>							
	Part #						
Upper Bearing	067T25U	2.506"	4.490"	2.83"	6.5"	\$548.00	614/615
Upper Bearing w/sleeve	067T25US	2.506"	4.490"	2.83"	6.5"	\$809.00	614/615
Lower Bearing	067T25L	2.506"	4.490"	2.83"		\$457.00	616
Lower Bearing w/sleeve	067T25LS	2.506"	4.490"	2.83"		\$719.00	616
<u>3" Inside diameter</u>							
Upper Bearing	067T30U	3.006"	4.990"	2.83"	7"	\$592.00	617/618
Upper Bearing w/sleeve	067T30US	3.006"	4.990"	2.83"	7"	\$909.00	617/618
Lower Bearing	067T30L	3.006"	4.990"	2.83"		\$494.00	619
Lower Bearing w/sleeve	067T30LS	3.006"	4.990"	2.83"		\$810.00	619
<u>3 1/2" Inside Diameter</u>							
Upper Bearing	067T35U	3.506"	5.490"	2.83"	7.5"	\$708.00	620/621
Upper Bearing w/sleeve	067T35US	3.506"	5.490"	2.83"	7.5"	\$1,073.00	620/621
Lower Bearing	067T35L	3.506"	5.490"	2.83"		\$573.00	622
Lower Bearing w/sleeve	067T35LS	3.506"	5.490"	2.83"		\$937.00	622
<u>4" Inside Diameter</u>							
Upper Bearing	067T40U	4.006"	5.990"	2.83"	8"	\$849.00	623/624
Upper Bearing w/sleeve	067T40US	4.006"	5.990"	2.83"	8"	\$1,263.00	623/624
Lower Bearing	067T40L	4.006"	5.990"	2.83"		\$659.00	625
Lower Bearing w/sleeve	067T40LS	4.006"	5.990"	2.83"		\$1,073.00	625



Jefa Rudder bearings for J-105 & J-120

PYI Inc. stocks rudder bearing designed to replace Harken rudder bearings used in the **J-105 & J-120**. These bearing fit with minor modification to the boat. Please review the following information about Jefa Rudder Bearings for your J-Boat.



J-105 Upper Bearing- Part # 0642J105.

Self aligning roller bearing with a mounting flange. The ball is easily removable with tools for cleaning and service if needed.

*The bearing is shipped with a stainless steel replacement sleeve to bond to the rudderpost. This sleeve has holes for the upper and lower pins used in the original bearings.

*This is typically a simple remove and replace job. Some boats may require minor modification.

J-105 Lower Bearing- Part #0641J105

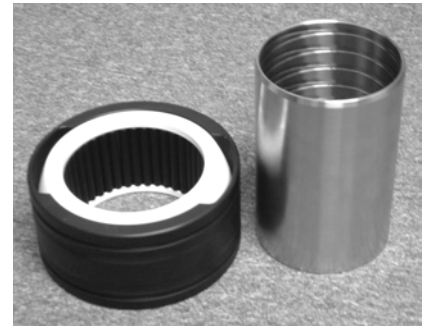
Self aligning roller bearing. The ball is easily removable with tools for cleaning and service if needed.

*The bearing is shipped with a stainless steel replacement sleeve to bond to the rudderpost.

*You will need to keep the existing sealing system in place.

We do offer replacement lip seals for the J105. Part #06PURJ105

*After the original bearing is removed, some clean up/grinding may be needed before bonding the new bearing into the boat.



J-120 Upper Bearing- Part # 0642J120

*Self aligning roller bearing with a mounting flange. The ball is easily removable with tools for cleaning and service if needed.

*The bearing is shipped with a stainless steel replacement sleeve to bond to the rudderpost. This sleeve has holes for the upper and lower pins used in the original bearings.

*This is typically a simple remove and replace job. Some boats may require minor modification.

J-120 Lower Bearing- Part #0641J120

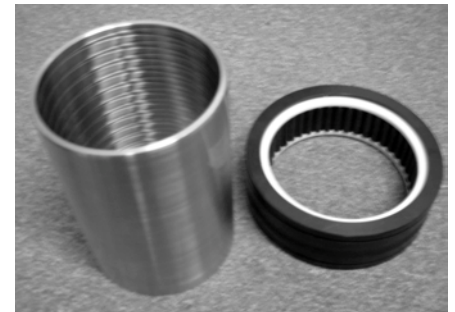
*Large ID roller bearing. Can be disassembled for service while in the boat.

*The bearing is shipped with a stainless steel replacement sleeve to bond to the rudderpost. The sleeve is the same height as the stock unit.

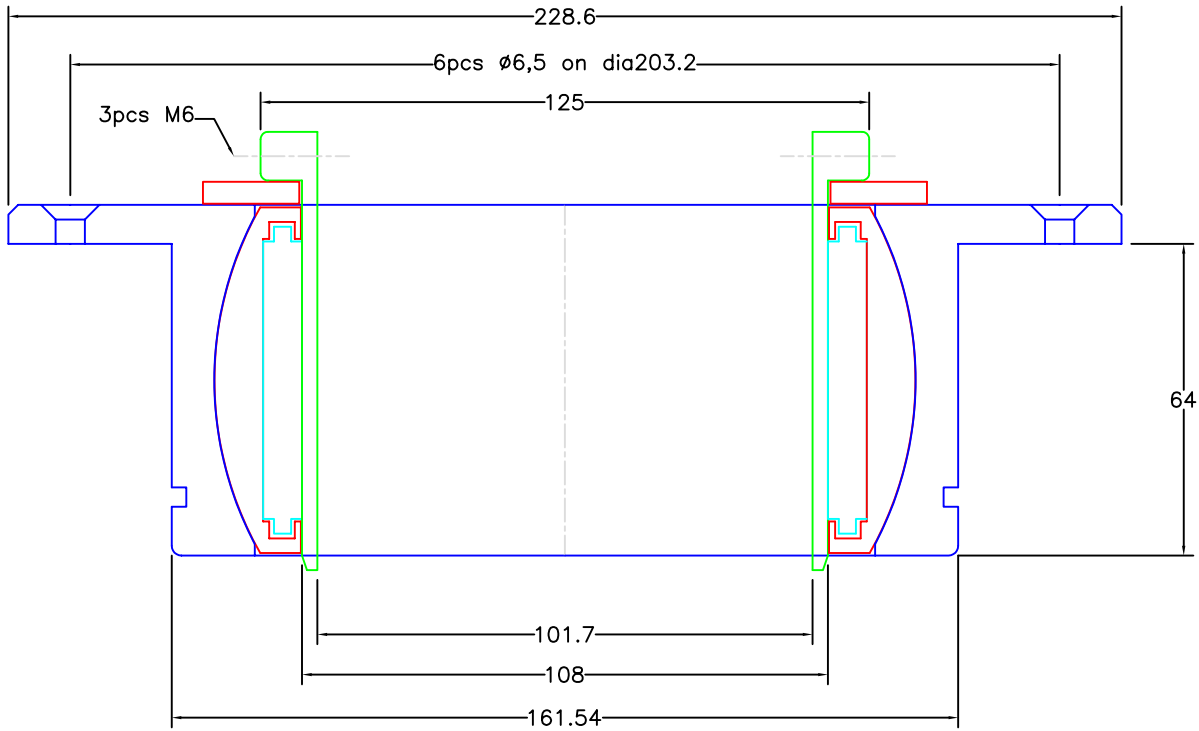
*You will need to keep the existing sealing system in place.

We do offer replacement lip seals for the J120. Part #06PURJ120

*After the original bearing is removed, some clean up/grinding may be needed before bonding the new bearing into the boat.

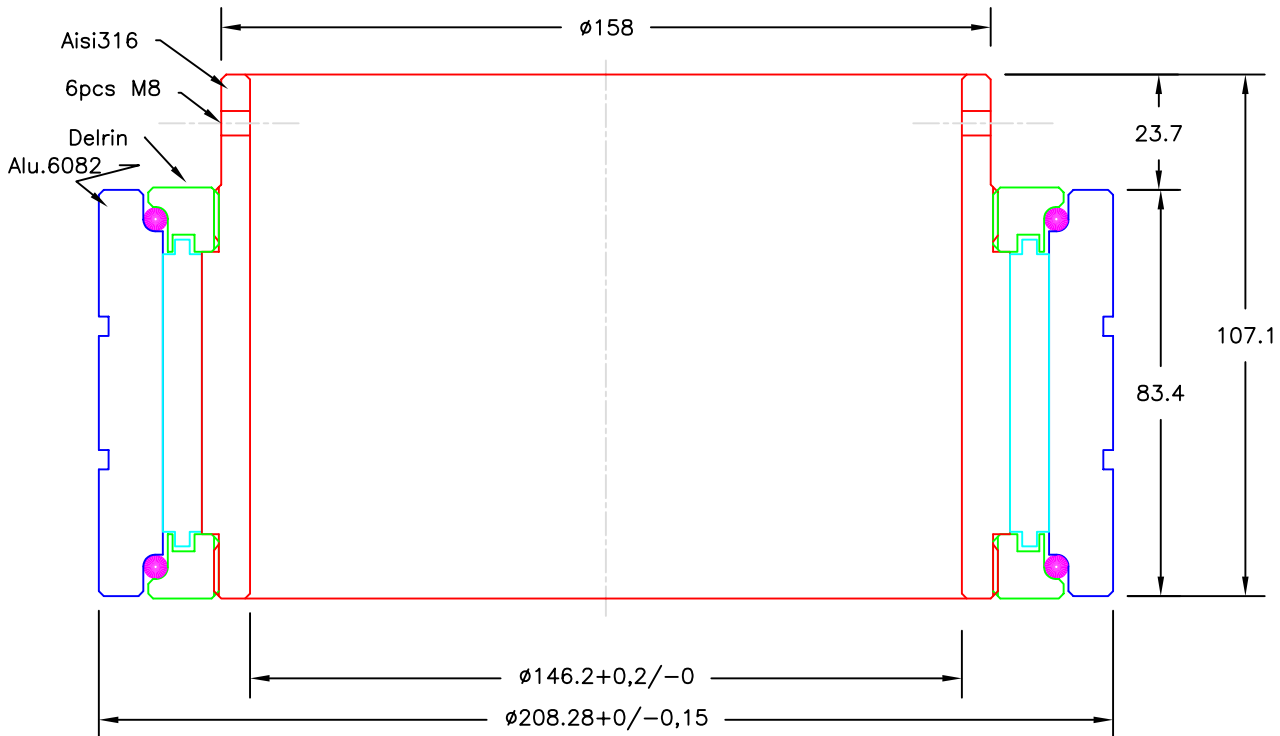


UPPER BEARING FOR J34, J35, J37, J40, J44.



Modify date	Project: Top Self-aligning bearing 4" J-35 upper bearing	Date	2005-02-02
Modify date	Scale	1:1	
Modify date	Material	Alu.6082	Drawing no. PYI0642J35
Modify date	Filename (dwg)	BEARING PART # 067T4HC125(S)	
Modify date	Drawn by	J.F.	

Jefa Rudder
S Y S T E M S
JEFA MARINE A/S
NIMBUSVEJ 2
2670 GREVE, DENMARK
Tlf. +45-4615 5210 & Fax +45-4615 5208
E-mail jefa@jefa.com & WWW.jefa.com



Max radial working load : 9700kg
Max axial working load : 1130kg

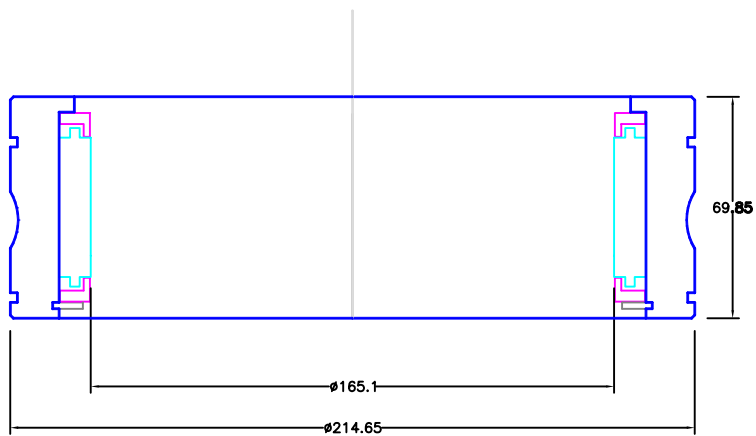
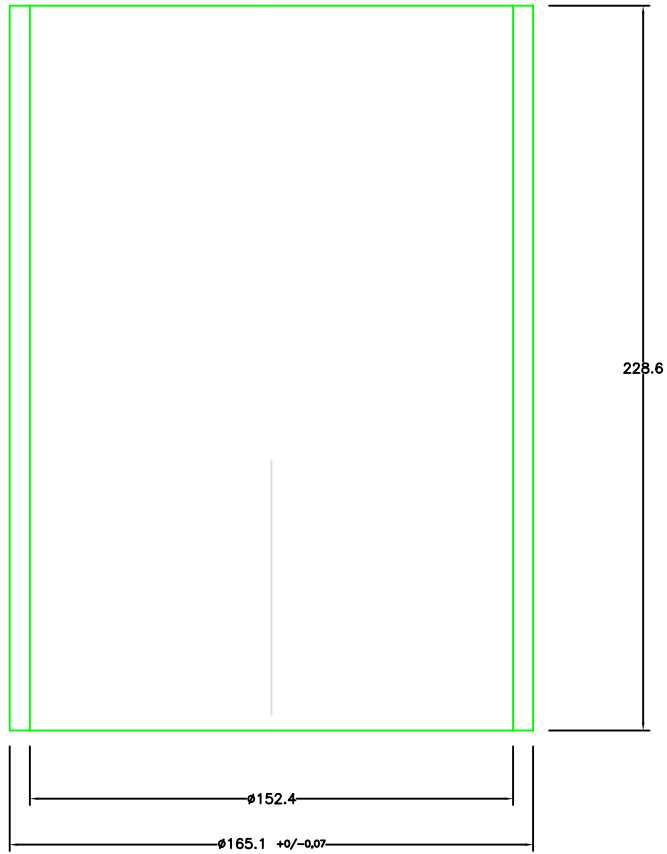
Modify date	Project: Rudder bearing with sleeve ID 146,2mm	Date	20011117
Modify date	Scale	1:1	
Modify date	Material	—	Drawing no. —
Modify date	Filename (dwg)	BEARING PART # 0641J35	
Modify date	Drawn by	J.F.	

JEFA MARINE a/s
SVEJSEGANGEN 3
2690 KARLSLUNDE
DENMARK
Tlf. +45-4615 5210
Fax. +45-4615 5208
WWW.jefa.com

LOWER BEARING FOR J34, J35, J37, J40

REVISIONS

ZONE	REV	DESCRIPTION	DATE	APPROVED
------	-----	-------------	------	----------



0641J120-J120 LOWER BEARING

	SIZE	FSCM NO.	DWG NO.	REV
	SCALE		SHEET	

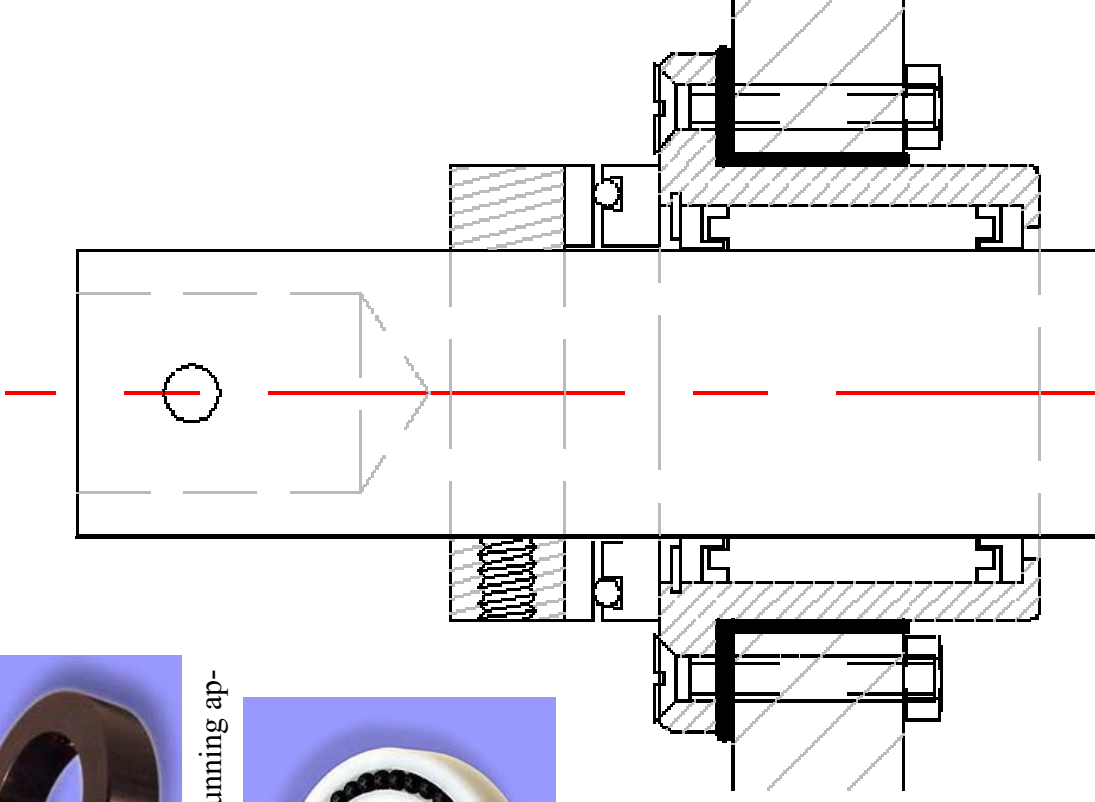
JEFA Locking Collars and Washers with a Ball Track.

Locking rings are made of anodised seawater resistant aluminium 6082 (AlMgSi1) and contain stainless steel set screws to achieve a perfect locking on the shaft. Its advisable to pre-drill the rudder shaft a couple of millimetres for the best security. Locking rings are used above the top bearing to prevent the rudder from sliding out of the vessel. Locking rings can also be used underneath the top bearing to prevent a light rudder from floating up. Between a locking ring and the bearing we always supply a delrin ring for a smooth rotation. For super smooth running applications we can supply a delrin ring with a ball race.



The Jefa washers with a ball track are used in combination with a locking ring to provide a smooth and light running vertical locking system.

The washer with balls replaces the standard delrin ring which acts as a gliding bearing and is normally positioned between the top bearing and locking ring above. The washer with balls is made of delrin and the balls are also made of delrin. The maximum working load varies depending of the diameter from 100 to 300 Kg.



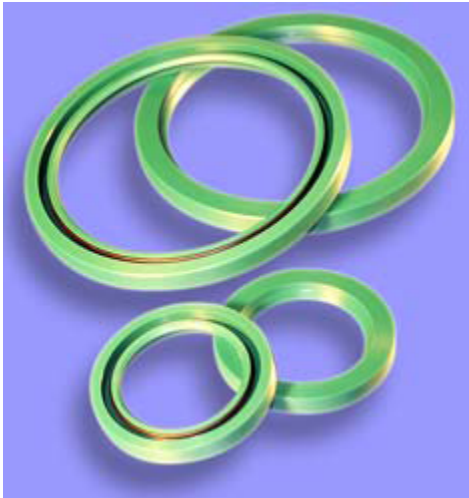
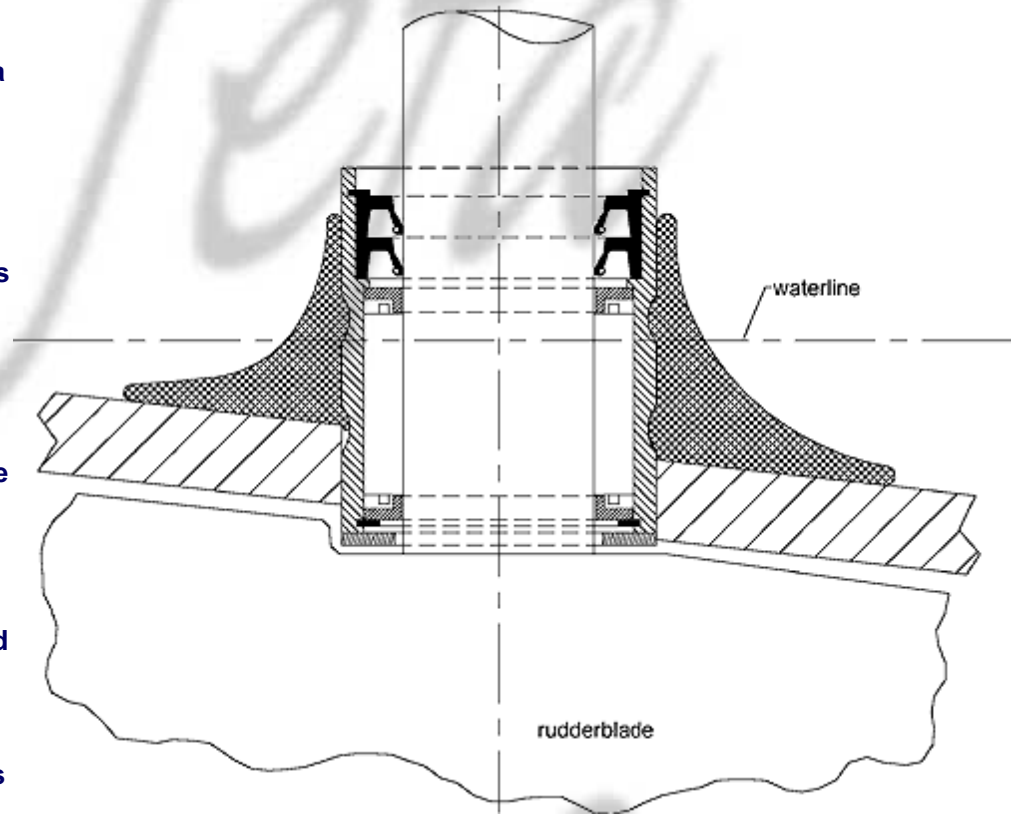
LOCKING RINGS PART NO.	RUDDER SHAFT dia.	BODY dia.	HEIGHT
46030-46039	from 30 to 39mm	64mm	20mm
46040-46054	rom 40 to 54mm	78mm	20mm
46055-46064	from 55 to 64mm	88mm	20mm
46065-46067	from 65 to 67mm	98mm	20mm
46068-46074	from 68 to 74mm	108mm	20mm
46075-46086	from 75 to 86mm	118mm	20mm
46087-46092	from 87 to 92mm	128mm	25mm
46093-46105	from 93 to 105mm	138mm	25mm
46106-46115	from 106 to 115mm	148mm	25mm
46116-46124	from 116 to 124mm	158mm	25mm
46125-46134	from 125 to 134mm	168mm	25mm
46...	from 135 to 300mm	CUSTOM	CUSTOM

Lip Seals.

Lip seals are used when the use of a tube is not possible. A typical situation is when the tiller lever or quadrant is located just above the bottom bearing. For security we recommend always to use 2 lip seals. To achieve a good sealing it is important that the contact area of the rudder shaft has a very smooth surface. It is not possible to use lip seals in combination with self-aligning bearings except for our standard self-aligning bearing where the seals are mounted in the inner housing and move with the deflection of the shaft.

Always use our special PUR lip seals. These are specially developed by us for rudder sealing purposes and contain no metals. When industry lip seals are used, they will have to be replaced every 2 years as the rubber will develop porosity and corrode the steel reinforcement ring inside the seal with as result a leaking rudder system.

Click on the pictures for a larger view.



Jefa Rudder
S Y S T E M S



JEFA Rudder Bearings 2009 Prices

The shaft diameter measurement must be +0.00"

	Part Number	Description	Price
"7T" Self Aligning Roller Bearings			
	067T25U	7T 2 1/2" Upper Bearing	\$548.00
	067T25US	7T 2 1/2" Upper Bearing w/sleeve	\$809.00
	067T25L	7T 2 1/2" Lower Bearing	\$457.00
	067T25LS	7T 2 1/2" Lower Bearing w/sleeve	\$719.00
	067T30U	7T 3" Upper Bearing	\$592.00
	067T30US	7T 3" Upper Bearing w/sleeve	\$909.00
	067T30L	7T 3" Lower Bearing	\$494.00
	067T30LS	7T 3" Lower Bearing w/sleeve	\$810.00
	067T35U	7T 3 1/2" Upper Bearing	\$708.00
	067T35US	7T 3 1/2" Upper Bearing w/sleeve	\$1,073.00
	067T35L	7T 3 1/2" Lower Bearing	\$573.00
	067T35LS	7T 3 1/2" Lower Bearing w/sleeve	\$937.00
	067T40U	7T 4" Upper Bearing	\$849.00
	067T40US	7T 4" Upper Bearing w/sleeve	\$1,263.00
	067T40L	7T 4" Lower Bearing	\$659.00
	067T40LS	7T 4" Lower Bearing w/sleeve	\$1,073.00
J-Boat Replacement Rudder Bearings			
J-33	067T30U	Upper bearing w/o sleeve	\$592.00
	67T30US	Upper bearing w/sleeve	\$909.00
	67T40L	Lower bearing w/o sleeve	\$659.00
	67T40LS	Lower bearing w/sleeve	\$1,073.00
J-34	067T4HC125	Upper bearing w/o sleeve	\$975.00
	67T4HC125S	Upper bearing w/sleeve	\$1,388.00
	641J35	Lower bearing w/sleeve	\$1,430.00
J-35	067T4HC125	Upper bearing w/o sleeve	\$975.00
	67T4HC125S	Upper bearing w/sleeve	\$1,388.00
	641J35	Lower bearing w/sleeve	\$1,430.00
J-37	067T4HC125	Upper bearing w/o sleeve	\$975.00
	67T4HC125	Upper bearing w/sleeve	\$1,388.00
	641J35	Lower bearing w/sleeve	\$1,430.00
J-39	642J120	Upper bearing w/sleeve	\$1,349.00
	641J120	Lower bearing w/sleeve	\$1,729.00
J-40	067T4HC125	Upper bearing w/o sleeve	\$975.00
	67T4HC125S	Upper bearing w/sleeve	\$1,388.00
	0641J35	Lower bearing w/sleeve	\$1,430.00
J-44	0642J120	Upper bearing w/sleeve	\$1,349.00
	0641J120	Lower bearing w/sleeve	\$1,729.00
J-46		Upper bearing w/o sleeve	call for quote
		Upper bearing w/sleeve	call for quote
	0641J120	Lower bearing w/sleeve	\$1,729.00
J-90	067T25U	Upper bearing w/o sleeve	\$548.00
	067T25US	Upper bearing w/sleeve	\$809.00
	067T25L	Lower bearing w/o sleeve	\$457.00
	067T25LS	Lower bearing w/sleeve	\$719.00
J-92	067T25U	Upper bearing w/o sleeve	\$548.00
	067T25US	Upper bearing w/sleeve	\$809.00
	067T25L	Lower bearing w/o sleeve	\$457.00
	067T25LS	Lower bearing w/sleeve	\$719.00
J-105	0642J105	Upper bearing w/sleeve	\$921.00
	0641J105	Lower bearing w/sleeve	\$1,146.00
J-120	0642J120	Upper bearing w/sleeve	\$1,349.00
	0641J120	Lower bearing w/sleeve	\$1,729.00
J-125	067T35U	Upper bearing w/o sleeve	\$708.00
	067T35US	Upper bearing w/sleeve	\$1,073.00
	067T35L	Lower bearing w/o sleeve	\$573.00
	067T35LS	Lower bearing w/sleeve	\$937.00
J-130	067T40U	Upper bearing w/o sleeve	\$849.00
	067T40US	Upper bearing w/sleeve	\$1,263.00
	0641J120	Lower bearing w/sleeve	\$1,729.00

Order Toll Free (800) 523-7558 or via the web at www.pyiinc.com.

PYI Inc., 12532 Beverly Park Road, Lynnwood, WA 98087-1524 Tel: (425) 355-3669 Fax: (425) 355-3661 E-mail: info@pyiinc.com